



**RIP Software**

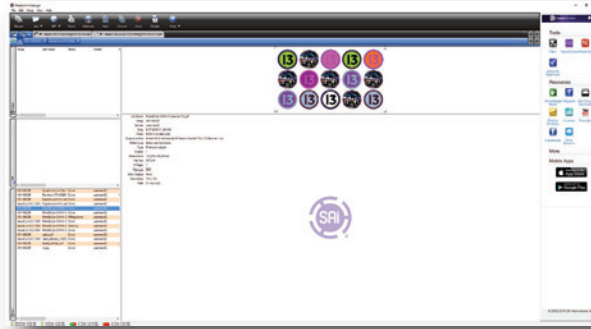


## **SAI FlexiPRINT SE 19 Mutoh Edition RIP Software for Mutoh Printers & Sign Cutting Plotters**

The easy to use FlexiPRINT SE 19 Mutoh Edition RIP solution, compatible with Mutoh's roll-to-roll wide format printers & sign cutting plotters, includes all the fundamentals for the single-workstation environment. Send jobs directly from popular design applications such as Adobe Photoshop® and Illustrator®, CorelDRAW® and CAD/AEC/GIS engineering solutions. Print automatically or manually tile and nest jobs before printing to a single printer. Enjoy the industry's most seamless print-and-cut workflow allowing you to add multiple contour cut lines to any design in a matter of seconds.

## **Product Highlights**

- Newly developed enhanced stochastic screening for smoother output
- Drives one wide format printer and one vinyl cutter
- Open or drag-and-drop TIFFs, JPEGs, EPS/PS files directly into the print queue
- Print-and-cut workflow enabled that allows multiple contour cut lines
- Print directly from creative applications
- Fast PDF RIP handles file transparencies and complex files with ease
- Scale, crop, tile and colour correct in seconds right from within the software
- Optimal media-save through automatic multiple file nesting
- 'New: 'Pantone fine-tune', allowing customisation of spotcolour composition
- Get more vibrant reds, greens and blues with the unique CleanColor™ feature
- ICC media profiles to give you the print results you want. Visit the download section @ [www.mutoh.eu](http://www.mutoh.eu)
- Print copy counter for fast track keeping of long production jobs



## SAI FlexiPRINT SE 19 Mutoh Edition RIP Software

### Features List

General Printing Features	<ul style="list-style-type: none"> <li>Receive Jobs from Local or Network Computer</li> <li>Print from any Application</li> <li>Printer &amp; Cutter Drivers supporting your Mutoh printer with over 1000 cutting plotters</li> <li>Allows up to 50 setups (pre-configurations) &amp; Make Setup Active / Inactive</li> <li>Manual Job Sorting</li> <li>Print Wizard</li> <li>Presets (Print mode &amp; printer settings) – Save, Load, Import, Export</li> <li>Output size compensation</li> </ul>
Supported File Formats	<ul style="list-style-type: none"> <li>Vector Formats (AI, EPS, PDF)</li> <li>Bitmap Formats (PSD, TIF, JPG, PNG, BMP)</li> <li>Native Files (PRT, PLT)</li> <li>DCS (Desktop Colour Separation)</li> <li>Flexi (FS), PhotoPRINT (PD)</li> <li>Microsoft Windows Metafile (WMF)</li> </ul>
Job Control	<ul style="list-style-type: none"> <li>Layout (Media Size, Job Size, Position, Copies/PDF page handling), scale &amp; mirror</li> <li>Workflow (Job Repeats &amp; Action after output)</li> <li>Colour Management</li> <li>Printer Options – Full printer control</li> <li>Cut – Contour cutting control</li> <li>Interactive Tiling and AutoNesting</li> <li>Labels and Print Marks</li> <li>Colour Adjustments (Contrast, Vividness, Brightness, Hue adjustment)</li> <li>Print copy counter for fast track keeping of long production jobs</li> </ul>
RIP	<ul style="list-style-type: none"> <li>Native 64-bit PDF RIP</li> <li>RIP Multiple Jobs Simultaneously</li> <li>Choke / Bleed</li> <li>HMTL-Based RIP Log for Production, Reporting</li> </ul>
Dither Methods	<ul style="list-style-type: none"> <li>Error Diffusion, Error Diffusion 2, Enhanced Stochastic, Enhanced Stochastic 2, Angled Screen Diffusion, Super Cell Halftoning, FMXPress Diffusion, LX Diffusion</li> </ul>

### Hardware Requirements

Operating System: Windows 7 (Min.) / Windows 10 Professional (Recommended)  
 RAM: 4 GB (Min.) / 8 GB (Recommended)  
 Screen Resolution 1024 x 768  
 Hard Disk Drive: 250 GB

Distributed by

### Package Content (Part Number : FPSEME19)

The DVD-box only includes a cloud activation code, but no installation disc. To activate the RIP license, instructions are included.

Note: High Speed Internet required for initial software download and activation

Mutoh's wide format printers & cutting plotter compatibility overview at [www.mutoh.eu](http://www.mutoh.eu).



**Watch tutorial movie on Mutoh Europe's YouTube channel !**

