

**RIP Software**

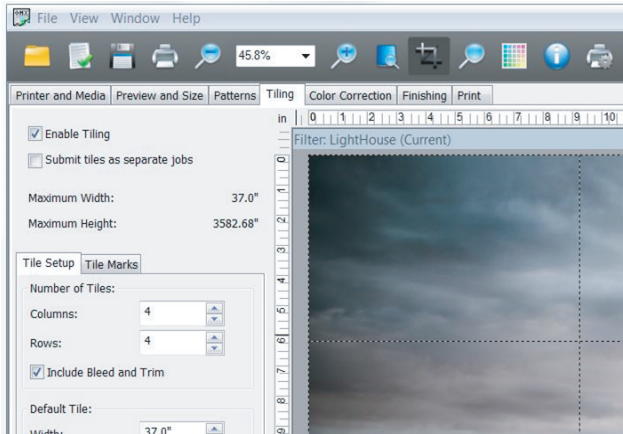


***ONYX RIPCenter Mutoh Edition provides everything you need to start printing on your new MUTOH printer***

ONYX RIPCenter™ software combined with MUTOH printers provides a winning combination for the control and simplicity needed to achieve consistent high quality output. The versatile tools in ONYX RIPCenter software make it easy to prepare jobs and create sellable prints faster.

***Product Highlights***

- Latest Adobe PDF Print Engine APPE 5.1 with pdf 2.0 support
- Cut Path Previewing in Job Editor and RIP-Queue
- Cut-Only workflow – Now go from design directly to CUT-Server
- Preview and size change in Job Properties
- Mirror image controls in Job Properties and Quick Sets
- Easily crop and size in Job Editor
- Automation of “Reflect at Print Time” via Quick Set and Nesting
- Ability to rearrange the order of RIP-Queue job columns
- Colour managed nesting previews
- Rotate jobs immediately when opening files
- Rotate jobs directly in RIP-Queue
- Job and key word search tool
- Disproportionate scaling
- Integrated Job Ticketing
- New nest trim box feature for easy weeding
- lccMAX v5 profile compatibility



### Minimum System Requirements

Operation System	Microsoft® Windows® 7 Professional 64-bit or newer (32-bit not supported)
Processor	Multi-core processor
RAM	8 GB minimum (4 GB / core recommended)
Hard Drive	500 GB (7200 rpm) (250 GB+ free space)
Monitor	1280 x 1024

## Simple

- Automate repetitive tasks with tools for print-only or print & cut applications
- Simple to use intuitive interface
- Automatic nesting and job previews
- Easy-to-use calibration tools to maintain consistent print quality
- Streamline job preparation, reduce errors and minimize material waste with ONYX Quick Sets

## Innovative

- Latest Adobe PDF Print Engine APPE 5.1 with pdf 2.0 support
- Full 64-bit platform for RIP and applications
- Colour managed previews provide confidence in accurate, final output before printing
- Job edits on the fly with Job Editor
- Track key customer and job information throughout the workflow with Job Ticketing
- Produce vibrant colour with software driven by ONYX Color, the proprietary colour engine, from Onyx Graphics
- IccMAX v5 profile compatibility

## Proven

- Eliminate bottlenecks with record RIP speeds thanks to advanced compression algorithms
- Consistent colour across devices and file types
- Supports Mutoh's entire range of sign & display printers & a wide selection of cutting plotters
- Easily train new employees with an intuitive user interface designed for your workflow

## Print & Cut Workflow

- A fully integrated print & cut workflow, supports hundreds of devices and combinations for your unique applications
- Preview cut paths, before submitting images to production, to enhance confidence in final output
- Eliminate the additional printing step and import jobs directly into the CUT-Server module with cut-only
- Nest trim box feature for easy weeding

## Quick Startup

- Open and print your first file in minutes with intuitive functions
- View active, upcoming and previously printed files within a single job queue

## Job Preparation

- Easily modify jobs, without switching applications, with access to Job Properties from RIPQueue
- Live colour managed preview shows colour correction and real time edits
- Simplify your workflow and minimize user decisions with ONYX Quick Sets

Distributed by



Watch tutorial movie on Mutoh Europe's YouTube channel!

